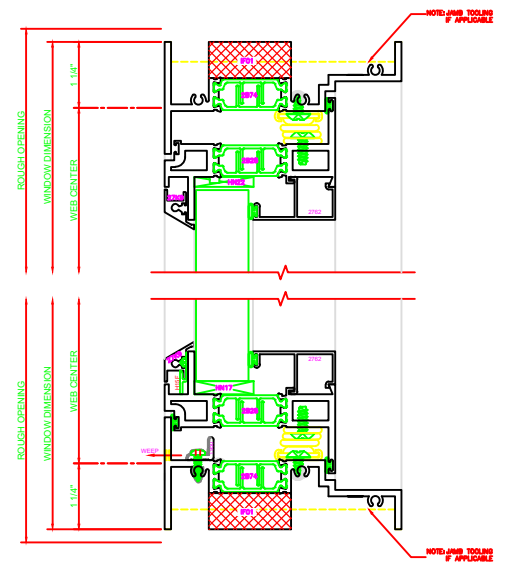
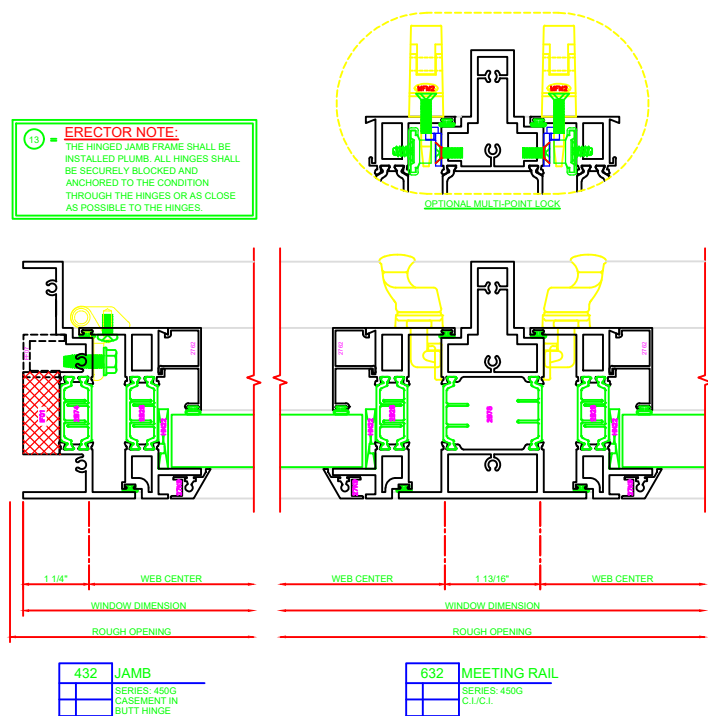


130 HEAD
SERIES: 450G
CASEMENT IN
4-BAR ARMS

230 SILL
SERIES: 450G
CASEMENT IN
4-BAR ARMS



4-BAR ARMS BUTT HINGE



13 ERECTOR NOTE:
THE HINGED JAMB FRAME SHALL BE INSTALLED PLUMB. ALL HINGES SHALL BE SECURELY BLOCKED AND ANCHORED TO THE CONDITION THROUGH THE HINGES OR AS CLOSE AS POSSIBLE TO THE HINGES.

131 HEAD
SERIES: 450G
CASEMENT IN
BUTT HINGE

231 SILL
SERIES: 450G
CASEMENT IN
BUTT HINGE

